



The OnSight mobile collaboration system delivers a powerful solution for enterprises who need to connect field workers and remote locations with internal experts immediately. In addition to the compact OnSight mobile devices, the system includes desktop software for the expert's computer, **OnSight Expert**, as well as administrator software to centrally manage the system including **OnSight Enterprise** and **OnSight Management Suite**.

on sight expert

OnSight Expert is the mobile collaboration application that resides on the desktops of your internal experts. OnSight Expert immediately connects professionals to remote locations by showing live video, 2-way audio and onscreen drawing from an OnSight 1000 or OnSight 2000 mobile device.

Features

- Connects to the OnSight mobile devices immediately to receive high quality video, audio and data on the desktop
- Uses VoIP 2-way audio via SIP enabled endpoints for integrated voice collaboration
- Includes full remote control of the camera features such as zooming, freeze frame and illumination
- Enables onscreen drawing / annotation to share information quickly and effectively
- Includes bi-directional image sharing modes for low bandwidth settings
- Supports automatic resizing according to video stream parameters
- Includes ability to take snapshots or record video remotely for long term record keeping
- Exports recordings to Quick Time Movie formats for portability
- Provides secure communications through AES encrypted audio, video and data

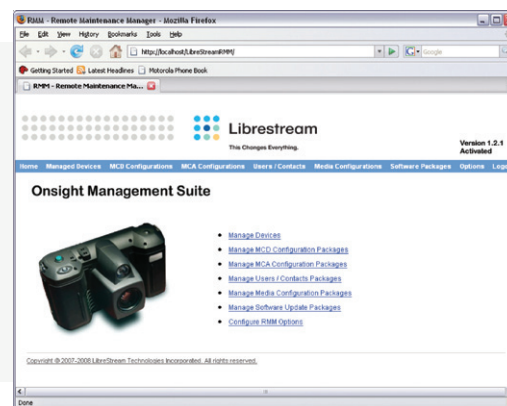


onsight management suite

Onsight Management Suite provides the tools your system administrator needs to efficiently manage their network of connected Onsight devices and Onsight Expert application endpoints through a web browser interface. Using Onsight Management Suite, enterprise administrators can view the status of all endpoints, create and apply system configurations, and manage and apply remote software updates.

Features

- Monitor the status of Onsight devices and Onsight Expert application endpoints
- Manage new endpoints that have been added to the network
- Create and modify packages for distribution to endpoints on the network such as configuration profiles, contact lists and software updates
- Control configuration profiles elements such as media settings, wireless networks, power settings, display, video, audio and call control, radio channels, login security settings, SNMP and password policy
- Automatically push new configurations or software updates to endpoints on the network

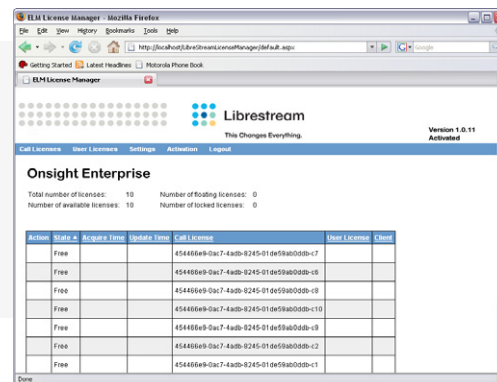


onsight enterprise

Onsight Enterprise provides a bundled solution for large enterprise environments that have an extensive network of Onsight mobile devices and Onsight Expert desktops. Onsight Enterprise is available in a variety of licensing bundles to optimize your network of experts and call volumes. It includes Onsight Expert desktop licenses as well as the Onsight Management Suite server software. With Onsight Enterprise, you can license, activate and manage connections between Onsight Expert and any Onsight device in the field.

Features

- Enables new users to download Onsight Expert to their PC from a central network server
- Provides an activation key to each new authorized Onsight Expert user license attached to the network
- Maintains a floating pool of call license keys
- Provides a temporary call license to an Onsight Expert user while it is in a call with an Onsight device



Librestream

This Changes Everything.

N.A. | 1.800.849.5507
 Intl. | +1.204.487.0612
www.librestream.com