



Application Note

Onsight Wireless Network Configuration

Table of Contents

WIRELESS NETWORK SETUP	3
Purpose	3
Onsight Setup Steps	3
View Network Status	8

Wireless Network Setup

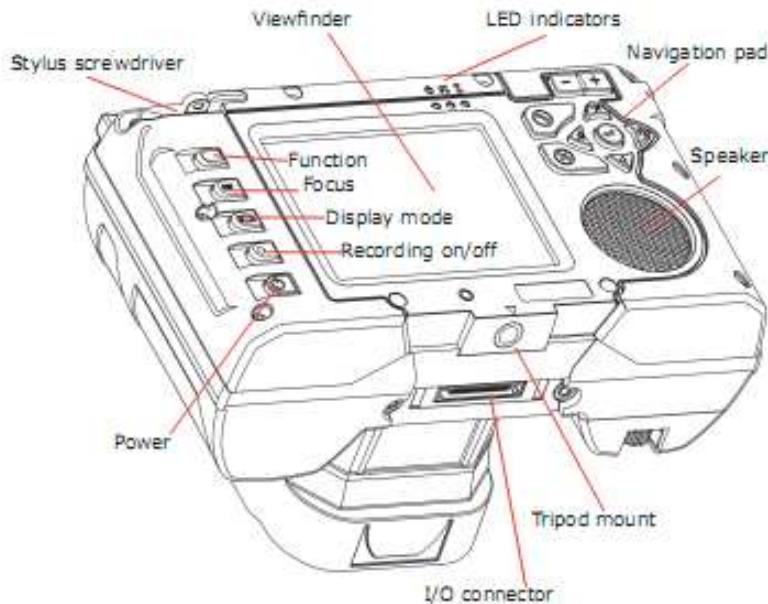
Purpose

The purpose of this document is to describe how to establish a wireless connection between an Onsite Device and a wireless access point.

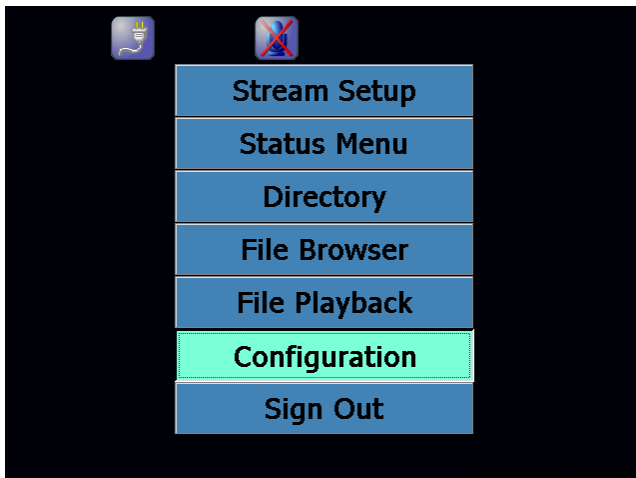
NOTE: Before proceeding, you must know the required wireless security credentials in order to establish a connection. For example, you should know the username and password and/or certificates. These security credentials will depend on the type of security enabled on the access point. Consult with your Information Technology department if you do not have this information.

Onsite Setup Steps

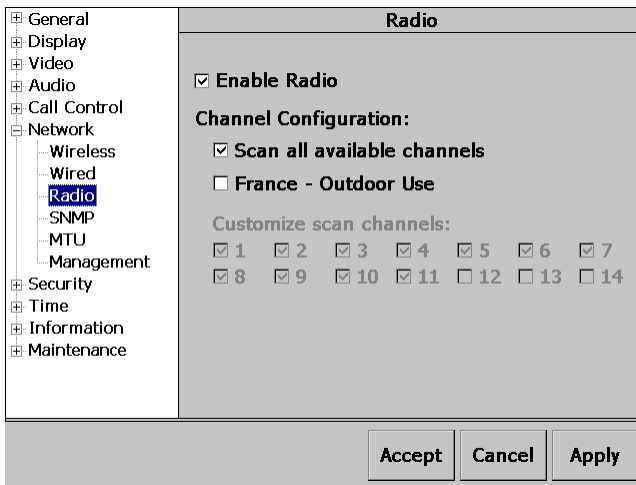
1. Display the Main menu by pressing the Display mode button three times. See Diagram to locate Display mode button.



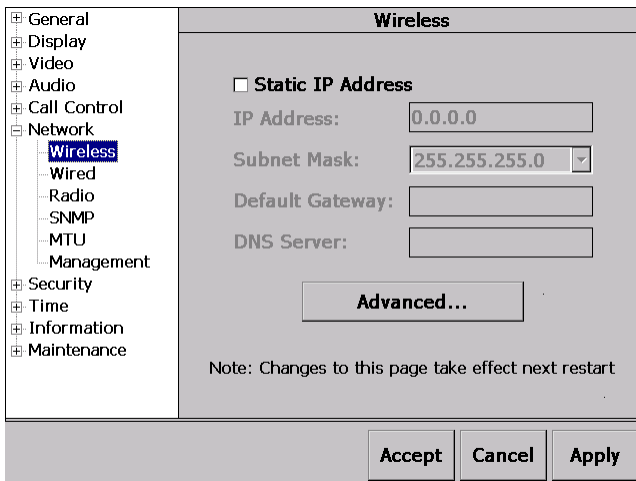
2. Tap the Configuration button. The Onsite main menu will be displayed, as below.



3. Select Network\Radio from the directory tree. Verify that the 'Enable Radio' check box is enabled.

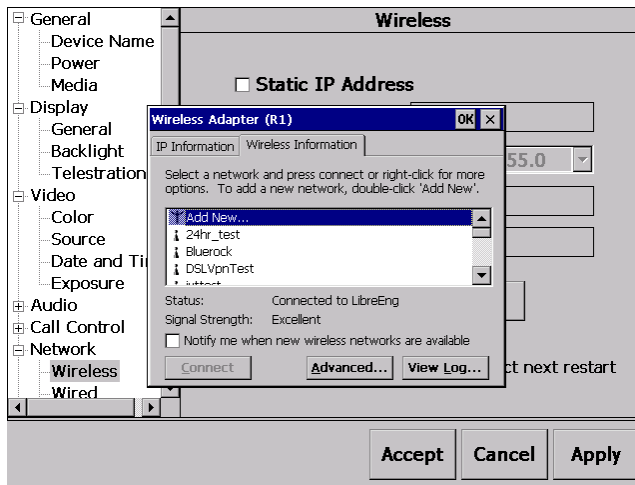


4. Select Network\Wireless from the directory tree. The Wireless page is displayed, as below.

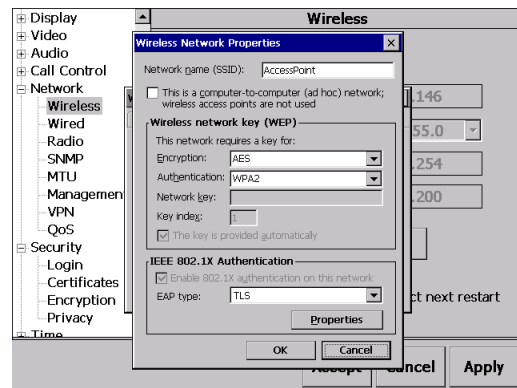
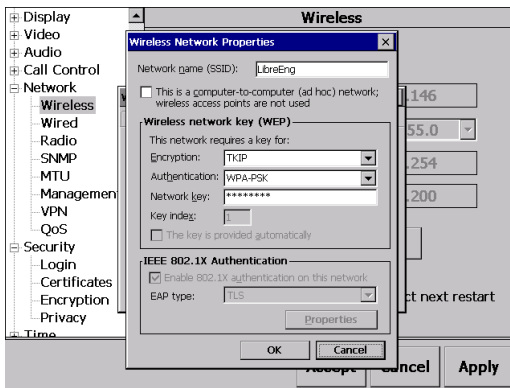


5. Check the 'Static IP Address' box if you have been assigned a static IP address for the device.
 - a. If using DHCP addressing, leave it blank.
 - b. NOTE: The static IP address change will not take effect until the next restart of the device.

6. Tap the 'Advanced...' button to display the 'Wireless Adapter' dialog, as below.
 - a. The Wireless Adapter dialog displays a scrollable list of Service Set Identifiers (SSIDs) in the area.

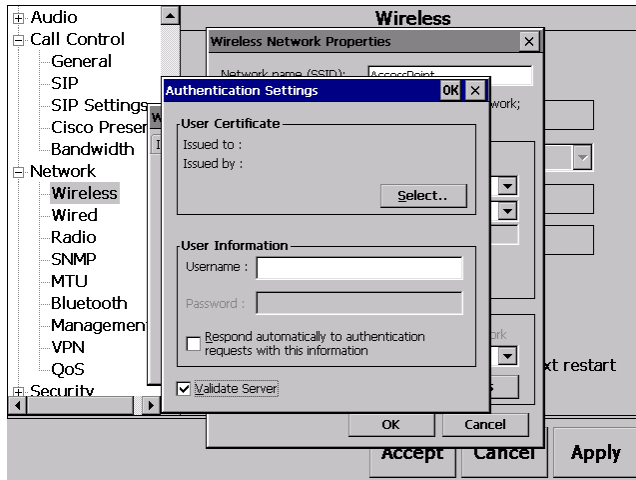


7. Double-click the SSID in the list that you wish to connect.
 - a. NOTE: The Access Point you are connecting to may not be broadcasting its SSID. In this case you will need to double-click the 'Add New' line in the list to access the 'Wireless Network Properties' dialog.
8. The 'Wireless Network Properties' dialog will be displayed, as below. The active elements on the page will depend on which type of Encryption and Authentication the Access Point supports.
 - a. WPA-PSK requires the client to enter a Pre-Shared Key
 - b. WPA2 requires either TLS or PEAP credentials

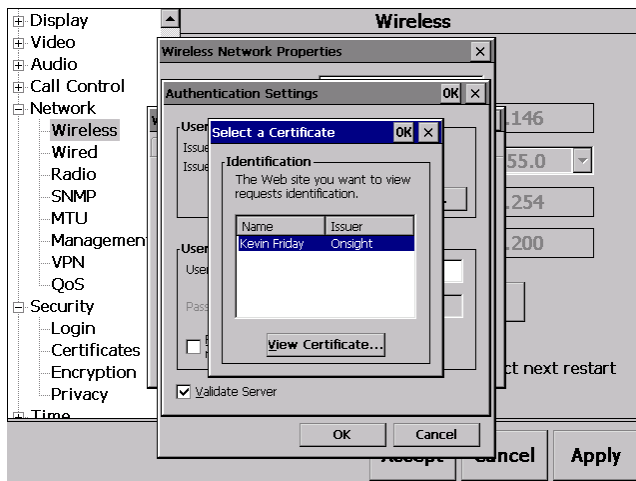


9. Enter the Wireless Network security credentials.
 - a. If using WPA-PSK enter the Network Key.

- b. If using IEEE 802.1X Authentication (TLS or PEAP), tap the 'Properties' button to display the 'Authentication Settings', as shown below.
 - i. Tap the Select button to choose the required User Certificate (TLS) and/or Enter the Username/Password (PEAP).
 - ii. Note: For TLS enter the Username for the certificate you select.



Note 1: The Client Certificate must be imported into the 'My Certificates' store under Configuration\Security\Certificates before it will appear in the 'Select a Certificate' Dialog.

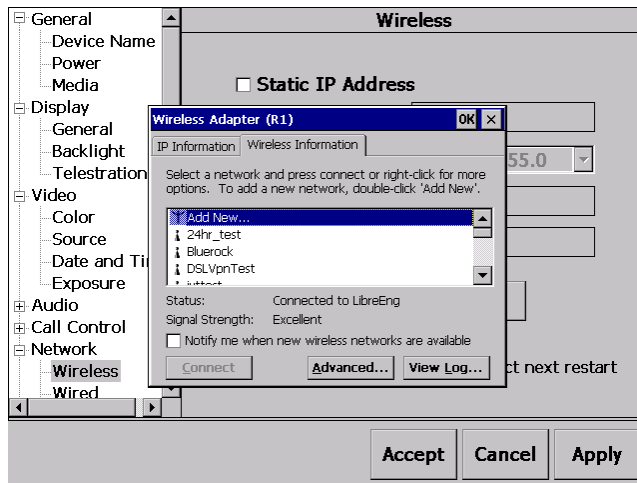


Note 2: Select 'Respond automatically to authentication requests with this information' to disable the 'Network Security Credentials' dialog box when associating to an Access Point. The device will respond automatically with the Username and Password.

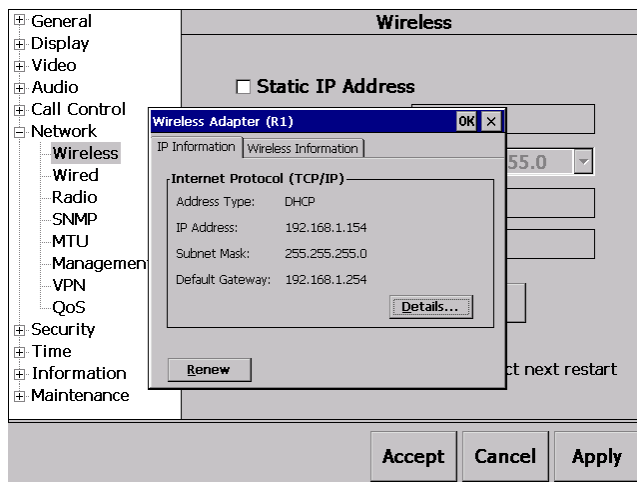
Note 3: Select the 'Validate Server' checkbox when the Server's certificate must be authenticated by the Device. This requires the signing Certificate Authority's certificate to be installed on the device.

10. Tap 'OK' on all dialogs to accept all settings and return to the 'Wireless Adapter' dialog.

11. The Status should be reported as 'Connected to...', as shown below.



12. The 'IP Information' tab reports the TCP/IP information for the established connection, as below.



13. Tap the 'Details...' button to view Network Connection details.

14. Tap 'Close' to exit the details.

15. Tap 'OK' to exit the dialog.

View Network Status

The Network Status information is also available from the Main Menu. To view, Select 'Status Menu' and then 'Network Status' to see the network details, as below.

